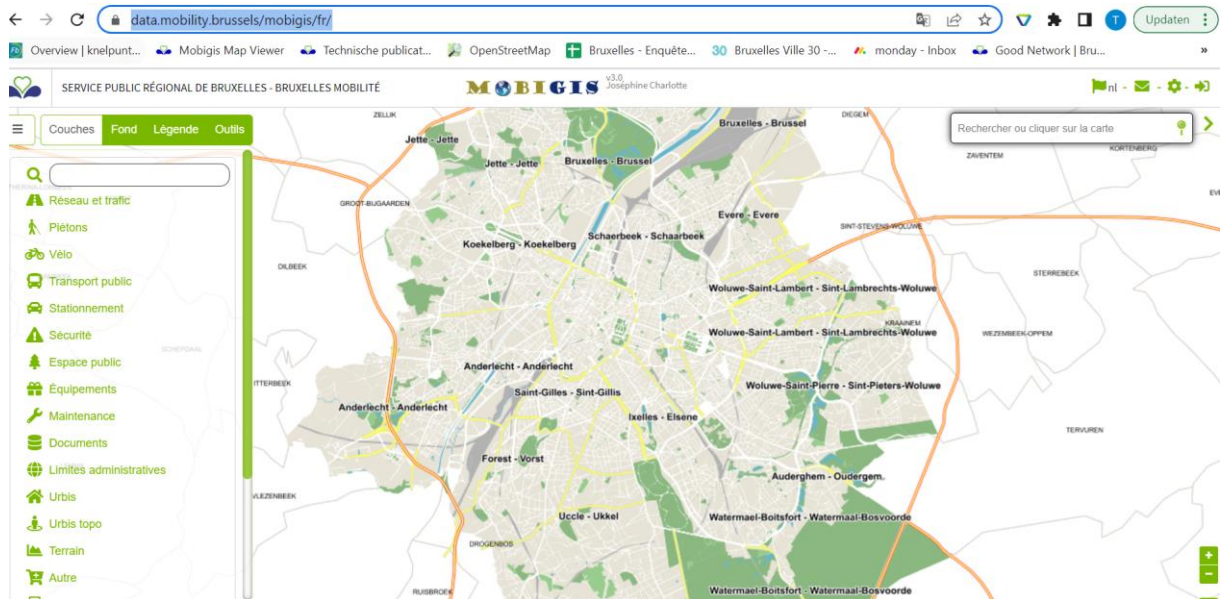
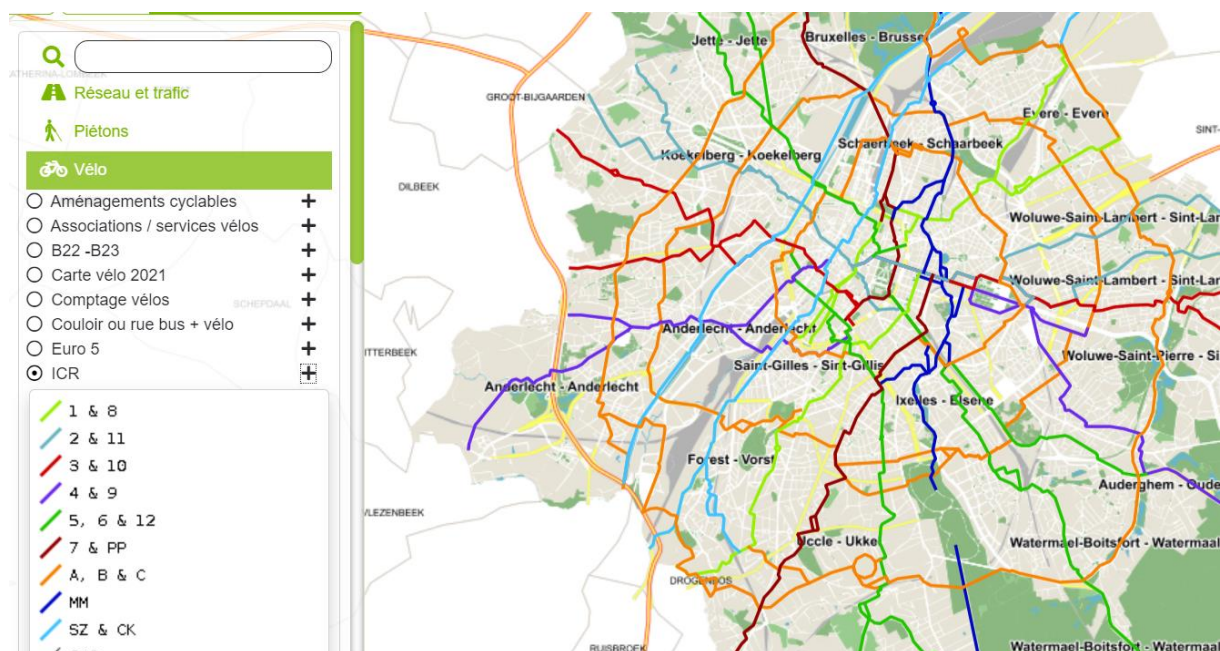


Woon ik op een GFR route? / Est-ce que je vis sur une ICR ? / Do I live on a Regional Cycling Route (ICR)?

1. Go to [data.mobility.brussels/mobigis/](https://data.mobility.brussels/mobigis/)



2. Click on the bike symbol in the left menu and then select ICR / GFR. The different Regional Cycling Routes will now appear on the map of Brussels



3. Check if you live on one of the regional cycling routes overlaps by filling in your address in the field on the right hand corner

